



# Sipi Secure<sup>SM</sup>

Secure Destruction

Capability Briefing

Providing Innovative Solutions For Over 115 Years

# Who We Are

Sipi is a Chicago-based company, with 250+ employees, that partners with **DoD**, **DoD Contractors**, the **Intelligence Community**, **Federal Government**, and **Commercial** entities, in the disciplines of organizational IT asset sanitization, chain of custody and inventory solutions.

The Sipi Secure<sup>SM</sup> direct to melt process utilizes a molten copper bath which turns target materials into a liquid alloy form. The molten material is then cast into an ingot rendering any retrieval of data impossible. FIREMELT<sup>SM</sup> ensures the destruction of data and IT assets, making data and component retrieval impossible.

Our goal is to protect your brand reputation by securely destroying classified & sensitive data-bearing assets through benchmark environmental stewardship practices.

# Sipi Corp

Precious  
Metals

Engineered  
Alloys

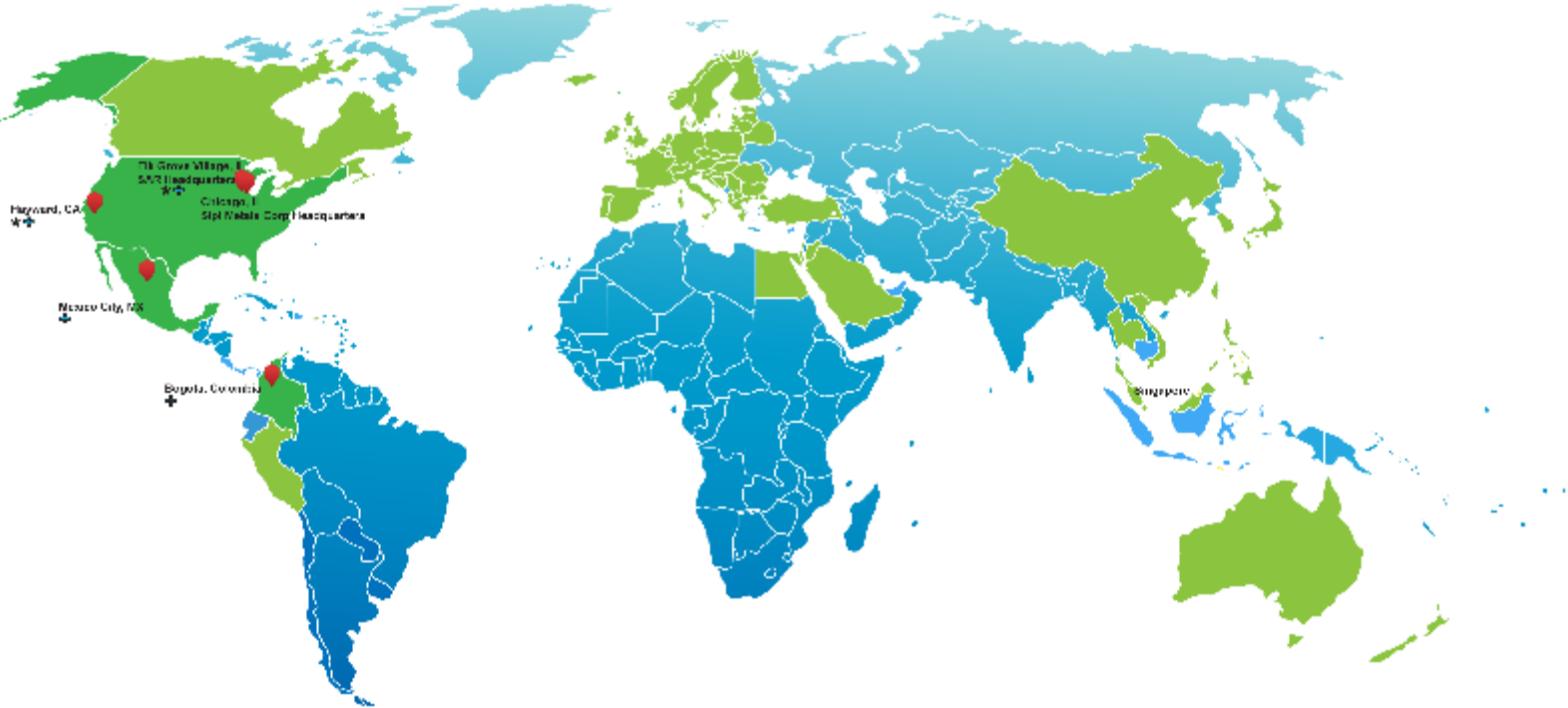
Sipi Asset  
Recovery

# Virtual Team

- Kevin Forde, (USAF, AFOSI, Ret):  
Secure Destruction, National  
Account Executive
- John Gainer, (FBI, Ret): Director of  
Security



# Where We Are Located



- 📍 Sipi Owned & Operated Facilities
- ★ e-Stewards Certified Facility
- + R2 Certified Facilities



# Sipi Secure<sup>SM</sup> Programs

- Developed to meet exacting requirements of clients
- Mitigates risks associated with ITAD and SD programs
- Secure limited-access facility for processing
- Flexible and scalable to process large quantities
- Packaging Programs- provides enhanced chain of custody from client facility to furnace



**IDAH Training**

IDENTIFICATION, DISMANTLING, AND HANDLING  
OF SECURE DATA-BEARING DEVICES

Training Session Now Available



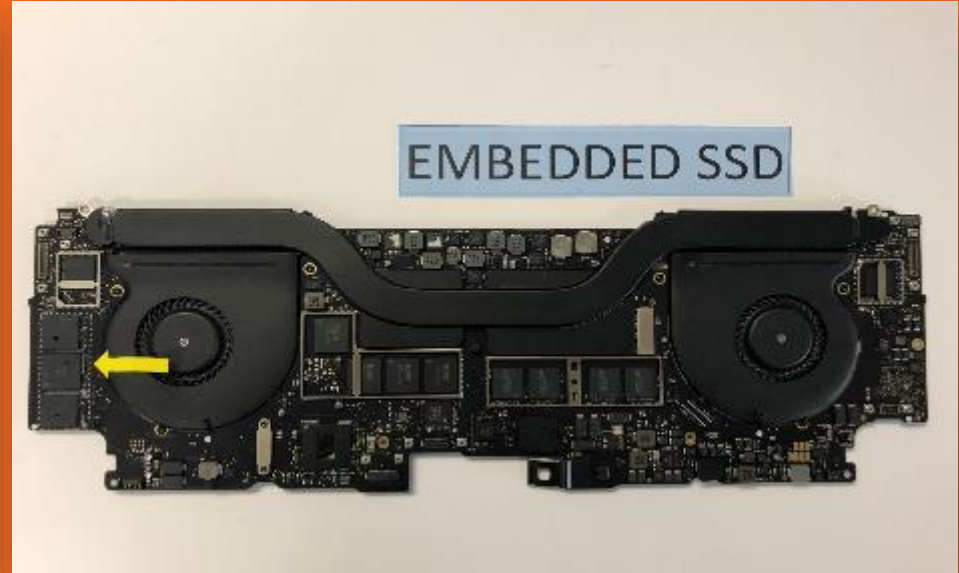
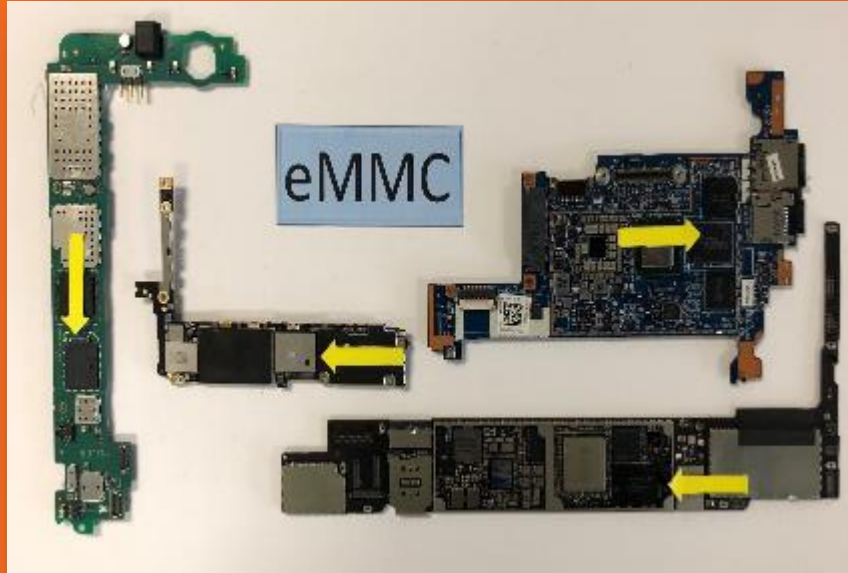
# Why SD? Impact of New Storage Technologies



## HAMR/MAMR/SSD/Embedded SSD/eMMC

- Capacity expanding exponentially
- Some sanitization methods ineffective
- AI challenges the definition of “sensitive”
- “End-of-life” importance in data security
- SD prevents compromise of classified IT assets with a final disposition of all material

# Surface Mounted Memory – Where is the Data ?



# Sipi Secure<sup>SM</sup> Process

- NSA/CSS compliant process/NIST 800-88 compliant
- Eliminates data recovery
- Environmentally responsible
- Direct-to-furnace
- Advantages over incineration and size reduction
- Value recovery





# Secure Destruction of Sensitive Data

- FIREMELT<sup>SM</sup> high temperature melting of materials to a molten liquid
- Ingots are cast from molten material for the purpose of metals recovery
- Contributing to the circular economy
- [FIREMELT<sup>SM</sup> VIDEO](#)



# Physical Security at the Sipi Metals Corp. Facility

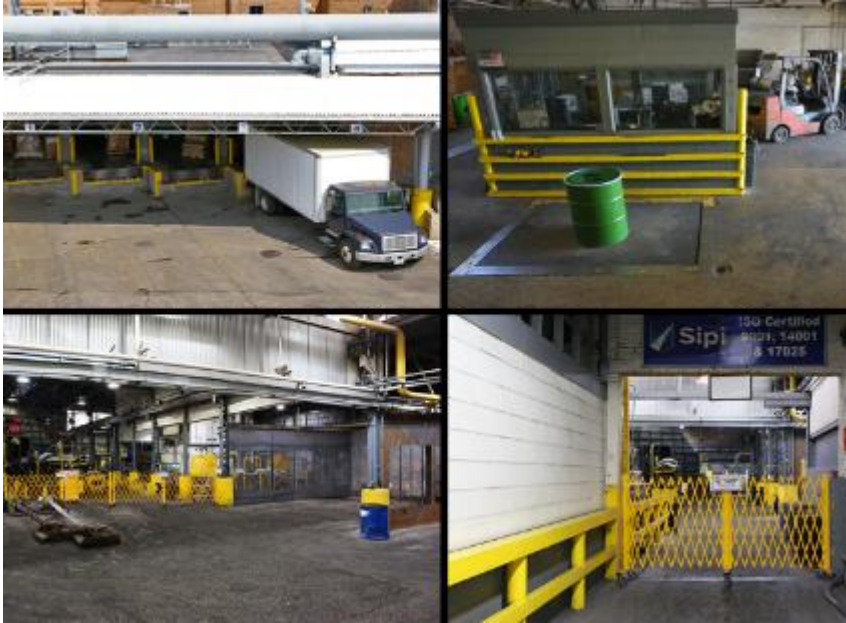
## John Gainer (FBI, Ret.), Director of Security

### Security Measures

- TAPA Certified Facility
- 24/7 - 365 - On Site Security Staff
- Digital CCTV, Perimeter Fencing, Access Control and Badging Systems
- SOPs / Contingencies / Training
- Relationships with Law Enforcement
- Combined 50 Years of Operational Law Enforcement Leadership Experience - Directed by Two Retired Federal Agents



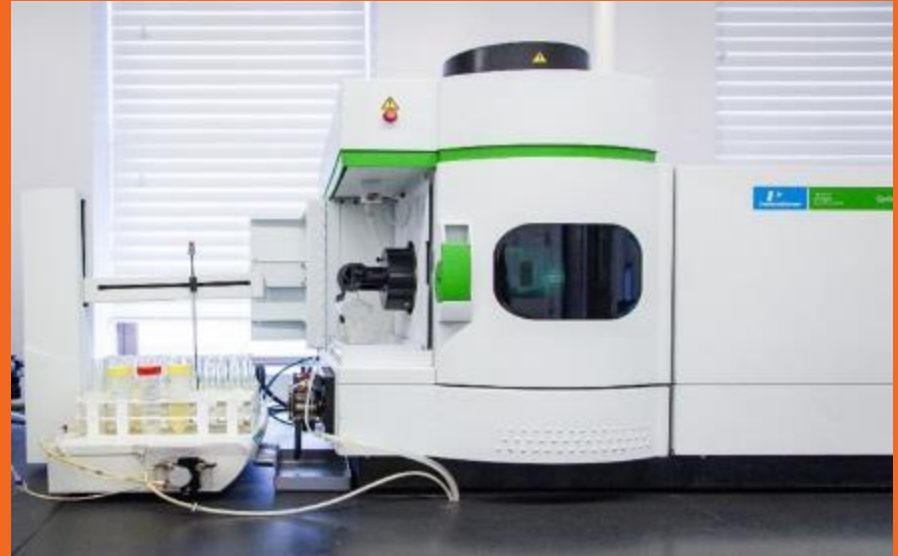
# Security: Secure Destruction Process



- SD security procedures modeled after Gov client requirements specific to safeguarding & handling classified material
- Only essential employee & client personnel on-site during the SD Process
- Client Cleared Witnesses
- Badging / Vests Identification
- Access Control Barriers

# Sipi's Laboratory – Accurate Sampling & Technical Precision

- Decades of scientific knowledge and technical expertise in Fire Assay and a myriad of wet chemical analytical techniques for precious metals and brass analysis
- Sipi's world-class metals laboratory, is **one of just a few worldwide** that is **ISO / IEC 17025:2005-certified** for precious metals and gravimetric copper
- Earning ISO / IEC 17025:2005 certification is a rare and lofty achievement for a metals testing and calibration laboratory
- The accuracy of our precious metals analysis has been accredited to vary less than 0.3 relative percent



# Fees & Pricing



**Tier 1:** Large lots/campaigns/routine material runs:  
HDD: 12k – 13K lbs. PCBs: 18k – 20k lbs.  
Revenue stream with expense mitigation and potential of a net zero event with a cost savings to the United States government.

**Tier 2:** Small lots per material type:  
HDD: 0 – 5k lbs. Min Charge Applies  
PCBs: 0 – 7500k lbs. Min Charge Applies



**Special Materials:** Film/sat phones/data sticks/misc., equipment. All on-person, field use, or on-vehicle electronics an operator may use.

# Compliance & Certifications



Elk Grove Village, IL, Hayward, CA



Elk Grove Village, IL, Hayward, CA, Mexico, Colombia



DUTCH ACCREDITATION COUNCIL



# Tour: Foundry & Laboratory



Sipi is always open for a tour of our two Chicago facilities: Sipi Corp in Chicago, and Sipi Asset Recovery in Elk Grove Village conveniently located near O'Hare International.

# THANK YOU

**Kevin Forde (USAF, AFOSI, Ret.)**  
**Secure Destruction - National Account Executive**

[kforde@sipi-metals.com](mailto:kforde@sipi-metals.com)

Cell: (773) 255-2243

**John J. Gainer (FBI, Ret.)**  
**Director of Security - Secured Destruction Specialist**

[jgainer@sipi-metals.com](mailto:jgainer@sipi-metals.com)

Cell: (773) 294-1673